



# GAT MONTHLY MEMBERSHIP PROGRESS REPORT

Results as of: 2/28/2023

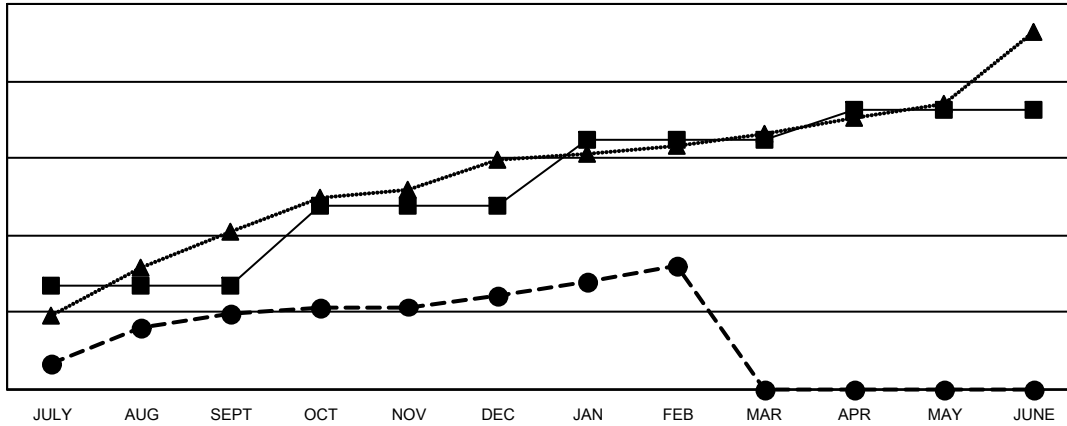
Multiple District 324

LOCATION: INDIA

Clubs			
RESULTS FOR 2022-2023			
QUARTER	NEW CLUB GOAL	NEW CLUBS	DROPPED CLUBS
JULY/AUG/SEPT	54	39	11
OCT/NOV/DEC	41	10	44
JAN/FEB/MAR	35	15	18
APR/MAY/JUNE	15	0	0

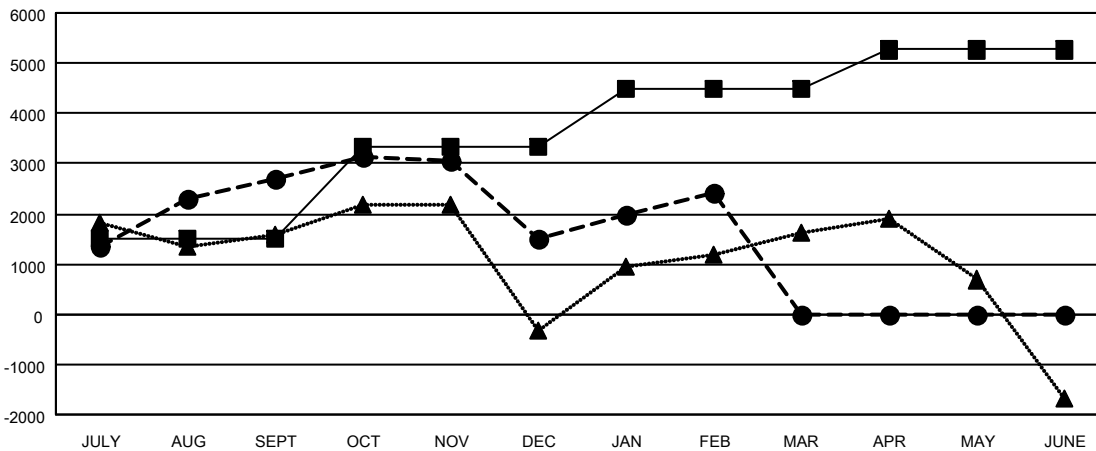
Members			
RESULTS FOR 2022-2023			
QUARTER	MEMBER GROWTH NET GOAL	MEMBER GROWTH ACTUAL	DROPPED MEMBERS ACTUAL (including transfers)
JULY/AUG/SEPT	1520	5,060	1,242
OCT/NOV/DEC	1800	2,105	2,937
JAN/FEB/MAR	1155	2,266	734
APR/MAY/JUNE	790	0	0

GOALS AND ACTUAL NEW CLUBS CUMULATIVE



- - CURRENT YEAR GOALS FOR NEW CLUBS
- - CURRENT YEAR ACTUAL NEW CLUBS
- ▲ - LAST YEAR ACTUAL NEW CLUBS

GOALS AND ACTUAL MEMBERS CUMULATIVE



- - MEMBER GROWTH NET GOAL
- - MEMBER GROWTH ACTUAL
- ▲ - LAST YEAR MEMBERSHIP ACTUAL

<b>DROPPED CLUBS: 73</b>	1197 CLUBS OF 1785 ADDED 1 OR MORE NEW MEMBERS	<b>GENDER DISTRIBUTION</b>
<b>DROPPED MEMBERS</b>	<a href="#">CLICK HERE FOR CUMULATIVE MEMBERSHIP DATA</a>	MALE 52,338 (77.00%)
DECEASED 160		FEMALE 15,625 (22.99%)
CLUB CANCELLED 1,538		NON BINARY 2 (0.00%)
OTHER 3,215		PREFER NOT TO ANSWER 8 (0.01%)
<b>TOTAL 4,913</b>		<b>TOTAL FAMILY UNIT MEMBERS 29,760</b>
		<b>FAMILY MEMBERS PAYING HALF DUES 18,470</b>